

# CTR<sup>®</sup> 7

SOLID, FLEXIBLE & INNOVATIVE



## PERFORM PER OEM REQUIREMENTS

The **CTR7** resistance spot welder, the new generation welding machine for vehicle collision repair, provides quality spot welds with all the new high-strength steels using cutting edge inverter technology.

A wide range of accessories and sophisticated software with semi-automatic control features guarantee perfect welding results. **CTR7** also contains the latest technological platform.

## PUSHING PERFORMANCE

The **CTR7** C-Tong also has a built-in pneumatic feature that presses the welding tips together automatically when triggered. Electrode force is an important ingredient in a good resistance weld. The pressure setting is visible in the control panel display and adjustable by the pressure regulator.

## INCREASED EFFICIENCY

The timer controls the duration of the current applied to the weld. The ideal is to try to attain a weld that uses higher current for a shorter time thereby reducing the heat. By automatically keeping the pressure after the current shuts off, the weld cools down under pressure forming a hardened and stronger weld, OEM accuracy inside your body shop!

## PERFORM SAFELY

The protection system monitors the welder when the C-Tong is used. The thermal and break sensors protect the welder in the event of overheating.

The **CTR7** has been designed and tested to exceed the strictest safety requirements.



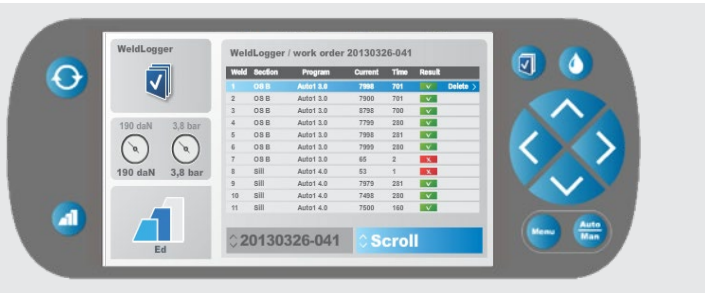
**THE CTR<sup>®</sup> 7 USES ELECTRICITY ONLY TO CREATE THE WELDS. THE WELD IS CREATED WHEN HIGH CURRENT IS TRANSFERRED THROUGH THE METALS, THE RESISTANCE IN THE METALS HEATS IT UP AND FUSES THE METALS TOGETHER IN A NUGGET.**

## FEATURES AND BENEFITS

- **INNOVATIVE COMPACT DESIGN** with low center of gravity for increased safety and easy handling
- **TRANSFORMER GUN TECHNOLOGY** for greater working range
- **ALUMINUM, TELESCOPIC SUPPORT ARM** with integrated balancer (optional) for adjustable height
- **POWERFUL OUTPUT** welding currents up to 12,000 amps for the toughest welding jobs
- **USER-FRIENDLY CONTROL PANEL** for easy navigation
- **LARGE 20 LITER TANK** for efficient water-cooled operation
- **WELDLOGGER** program for documentation and registration of welding data via PC and USB (optional)

## WELDING DATA DOCUMENTATION

The **CTR7** records weld data during the repair process and generates reports that can be printed.



## TURN THE WELDLOGGER™ INTO YOUR BEST SUPPORT

The **CTR7** records weld data and generates reports during the repair process.

Print the report to testify to the quality of the welding and increase the trust in your body shop.

- PC and machine software for documentation and registration of welding data
- Records welding current, time, date, program and result
- Creates work orders
- Saves welding data with print out possibilities via USB

## STANDARD COMPONENTS

**C-YOKE 40MM THROAT DEPTH, WATER COOLED**



**C-YOKE 80MM THROAT DEPTH, WATER COOLED**



**C-YOKE 350MM THROAT DEPTH, WATER COOLED**



**C-YOKE 500MM THROAT DEPTH, WATER COOLED**



Product images are for illustrative purposes only and may differ from the actual product. Car-O-Liner reserves the right to modify any content without prior notice.

Car-O-Liner (2019) is a trademark of Snap-on Incorporated. All rights reserved.

SPECIFICATION	PARAMETER
MAX. VOLTAGE	Art. No. 47123 208V 60Hz 3-phase Art. No. 47124 460V 60Hz 3-phase
MAX. POWER	75kVA
FUSE (DELAYED ACTION)	60A (208V) / 30A (460V)
PROTECTION TYPE	IP21
INSULATION CLASS	F
COMPRESSED AIR SUPPLY	72-145 psi
POWER UNIT FOR TRANSFORMER GUN (10 KHZ)	
OUTPUT CURRENT	0-200A
OUTPUT VOLTAGE	560V
COOLING	
COOLING POWER	1000W
TANK CAPACITY	5.3 gal (20 L)
FLOW RATE	0.53 gal/min / (2 l/min)
CONFIGURATION	
DIMENSIONS (HXWXD) APPROX. (WITHOUT SUPPORT ARM)	44.5 x 25.5 x 36.5 in (1130 x 650 x 930 mm)
WEIGHT APPROX. (WITHOUT SUPPORT ARM)	202 lbs (92 kg)
TECHNICAL DATA TRANSFORMER C-GUN CONNECTION DATA	
PRIMARY VOLTAGE/FREQUENCY	560V/10kHz
PRIMARY POWER (100% DUTY CYCLE)	20kVA
PROTECTION TYPE	IP21
INSULATION CLASS	F
COOLING TYPE	Liquid Cooled
WELDING CIRCUIT	
WELDING AMPERAGE	10,000 A (Current Controlled)
MAX. OUTPUT AMPERAGE	12000A
NO-LOAD VOLTAGE	12.5VDC
MECHANICAL DATA	
ELECTRODE FORCE	0 - 500daN (0 - 1124lbf)
WEIGHT (WITH 80MM YOKE)	24 lbs. (11kg)
CABLE LENGTH	19.7 ft. (6m)

## DISTRIBUTOR